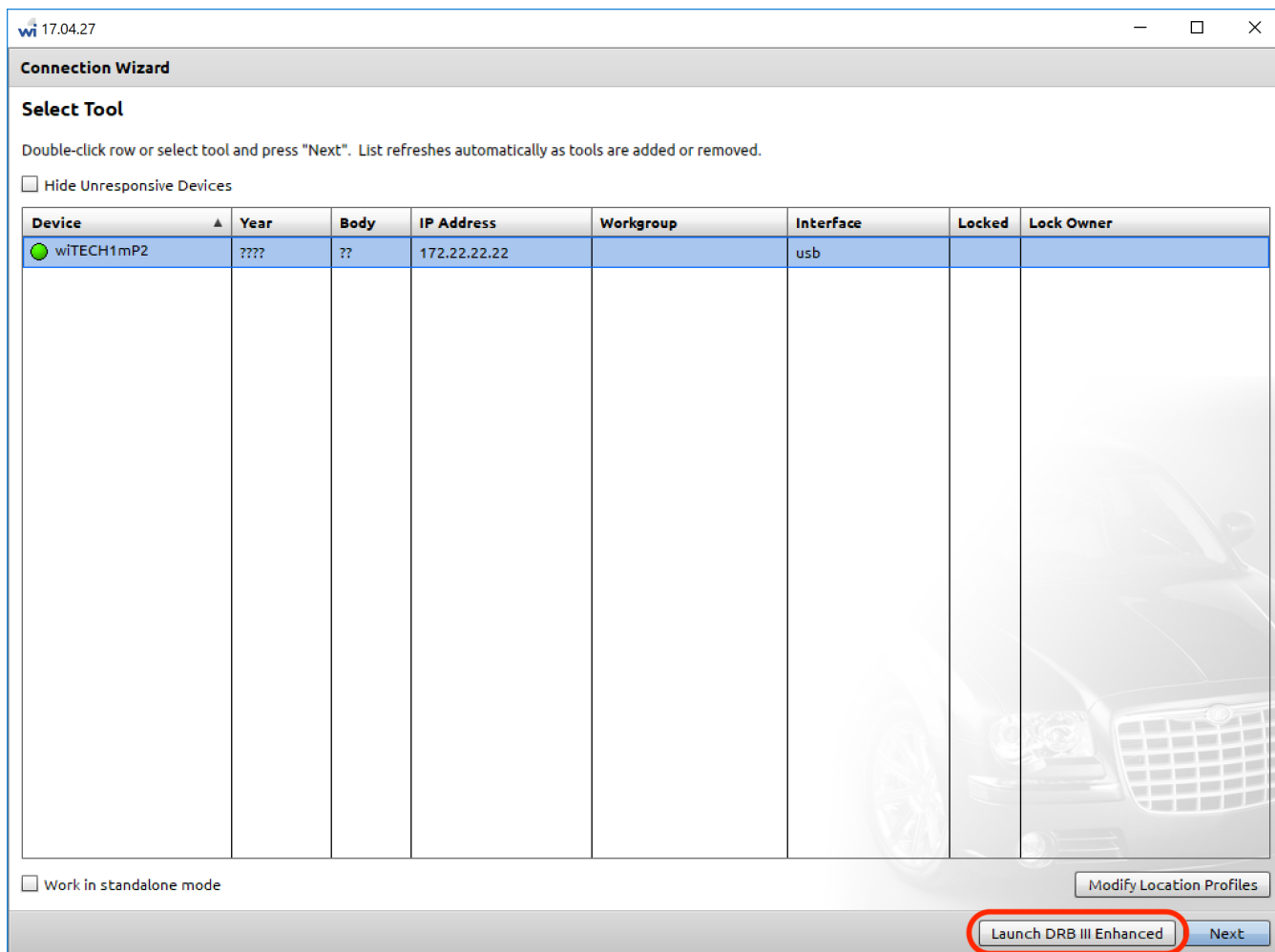


# wiTECH 1 / Enhanced DRB III Emulator Dealership Requirements

515 Chris Ordner Tue, Jul 24, 2018 [wiTECH 2 Public Articles](#) 3747

FCA requires the use of the wiTECH Diagnostic Application (wiTECH 1) to launch Enhanced DRB III Emulator for diagnostics on legacy bus ECUs and vehicles. All dealerships should have at least one microPOD 2 with the first three serial letters WSP or WFP dedicated for use with wiTECH 1 / Enhanced DRB III Emulator.



The wiTECH Diagnostic Application (wiTECH 1) can be downloaded and installed on a Windows PC from DealerCONNECT (DealerCONNECT > Service > wiTECH Information (Under the SERVICE TOOLS & EQUIPMENT section) > Legacy Tools > wiTECH Software Installer). Installation instructions are also found in this DealerCONNECT location.

For general diagnostic tool to vehicle year model reference, please see the article: [Vehicle to Diagnostic Tool Reference Chart](#)

For Enhanced DRB III Emulator requirements, see the article: [Enhanced DRB III Emulator](#)

For a list of vehicles that require multiple diagnostic tools for diagnostics, see: Legacy Vehicles Not Fully Supported with wiTECH 2.0

Online URL: <https://kb.l.fcauwitech.com/article/witech-1-enhanced-drb-iii-emulator-dealership-requirements-515.html>